



GREEN • URBAN • COMFORT

**EMBRACE COMFORT AND SUSTAIN THE FUTURE
WITH KING PROPERTIES'
FIRST SUSTAINABLE LIVING DEVELOPMENT**

BRGY. POBLACION, LILOAN, CEBU



**TLTS NO. 0000038
COMPLETION DATE: DECEMBER 30, 2027**





ARTIST'S PERSPECTIVE

DAHLIA (DUPLEX)



This developer reserves the right to change any detail herein without prior notice.

FLOOR PLAN

DAHLIA (DUPLEX)



GROUND FLOOR



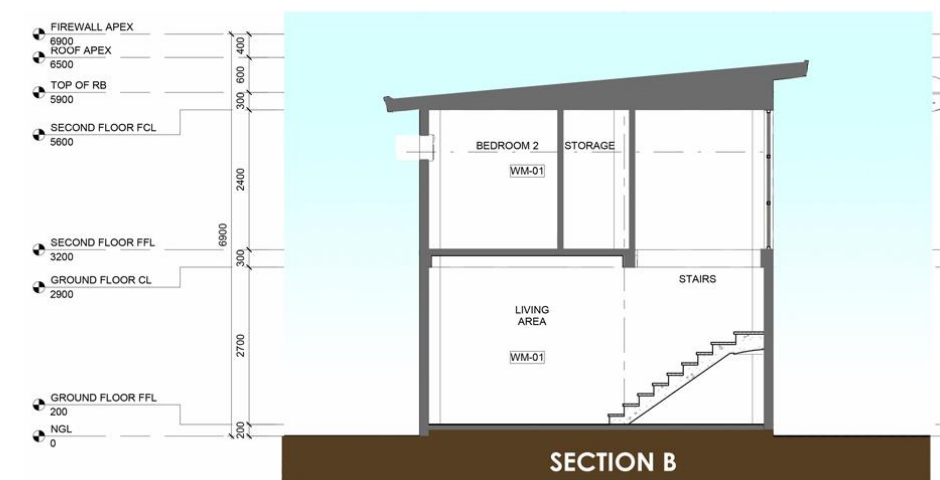
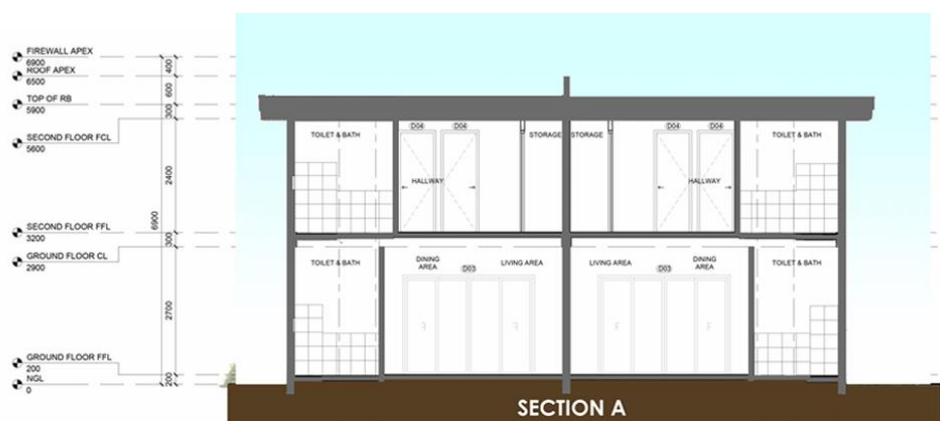
SECOND FLOOR

UNIT SUMMARY	
No. of Units	34
Lot Size	88-188 SQM
Floor Size	69 SQM
No. of Storey	2
Bedrooms	3
Toilet & Bath	2
Car Park	1

BRGY. POBLACION, LILOAN, CEBU
 TLTS NO. 0000038 | COMPLETION DATE: DECEMBER 30, 2027

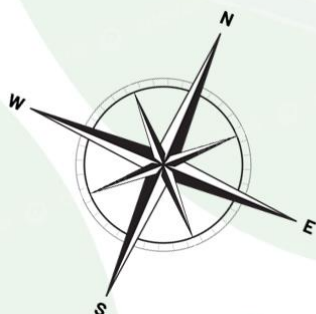
CEILING HEIGHT

DAHLIA (DUPLEX)



Ground Floor	
Porch	+2.70M
Living Area	+2.70M
Dining Area	+2.70M
Kitchen Area	+2.70M
Common T&B	+2.70M
Second Floor	
Master Bedroom	+2.40M
Bedroom 1	+2.40M
Bedroom 2	+2.40M
Master T&B	+2.40M
Common T&B	+2.40M

DAHLIA (DUPLEX)

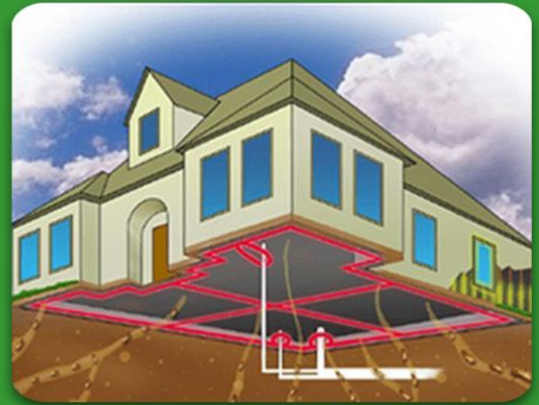


BRGY. POBLACION, LILOAN, CEBU
TLTS NO. 0000038 | COMPLETION DATE: DECEMBER 30, 2027

HOUSE FEATURES

DAHLIA (DUPLEX)

- ✓ SOLAR PANELS
- ✓ PEST CONTROL PROVISIONS
- ✓ MY SPACE
- ✓ SUNDECK
- ✓ RAIN WATER TANK
- ✓ BIDET
- ✓ LED LIGHTING FIXTURES
- ✓ WATER EFFICIENT FIXTURES
- ✓ PAVERS FOR PARKING



**Not actual photos*

BRGY. POBLACION, LILOAN, CEBU
TLTS NO. 0000038 | COMPLETION DATE: DECEMBER 30, 2027

DAHLIA (DUPLEX)



ARTIST'S PERSPECTIVE

UPDATED DELIVERABLES

STRUCTURE

Framing
Slab on Fill
Suspended Slab
Roof Framing

Reinforced Concrete
Reinforced Concrete
Reinforced Concrete
Steel Rafter Type

KITCHEN

Countertop
Sink
Base Cabinet

Synthetic Granite
Doublet Tub Stainless Steel
MDF Board Wood Grain Finish

WALL FINISHES

Exterior
Interior
Toilet and Bath

Painted Finish
Painted Finish
Ceramic Tiles

TOILET AND BATH

Water Closet
Lavatory
Shower Head
Accessories

One Piece Ceramic Type
Wall Hung Ceramic tType
Rain Shower Type
Bidet Spray

FLOOR FINISHES

Ground Floor
Second Floor
Toilet and Bath

Ceramic Tiles
Ceramic Tiles
Ceramic Tiles